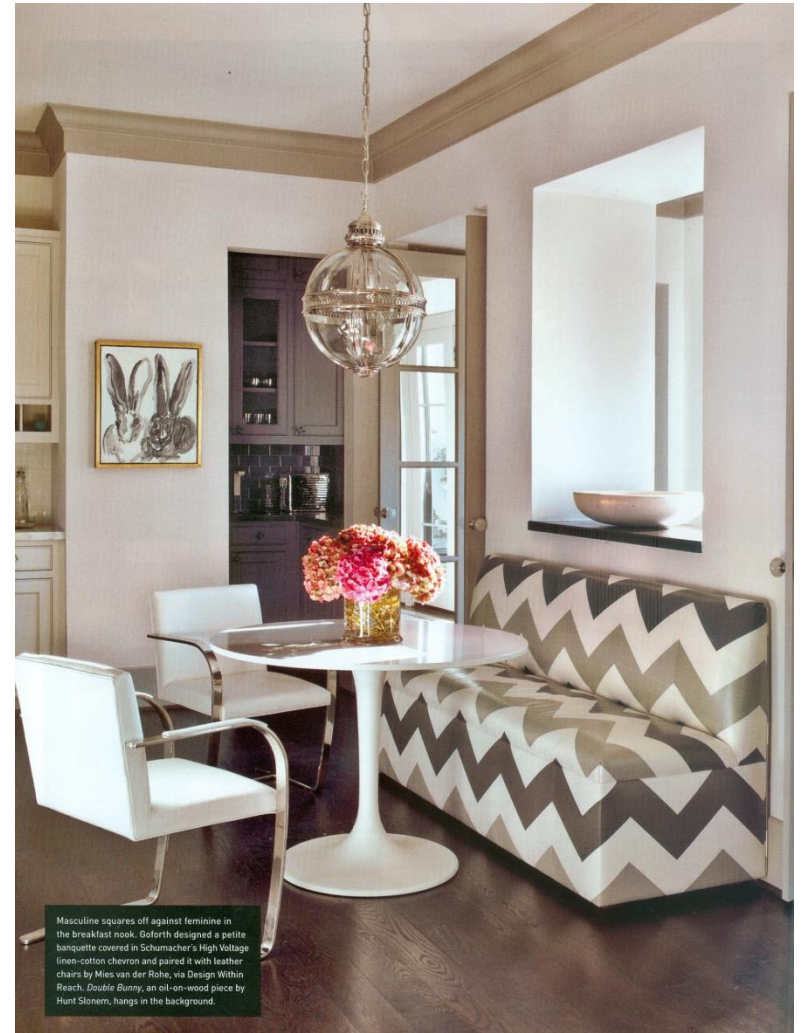




LUXE INTERIORS + DESIGN WINTER 2013



Masculine squares off against feminine in the breakfast nook. Goforth designed a petite banquette covered in Schumacher's High Voltage linen-cotton chevron and paired it with leather chairs by Mies van der Rohe, via Design Within Reach. Double Bunny, an all-on-wood piece by Hunt Slonem, hangs in the background.